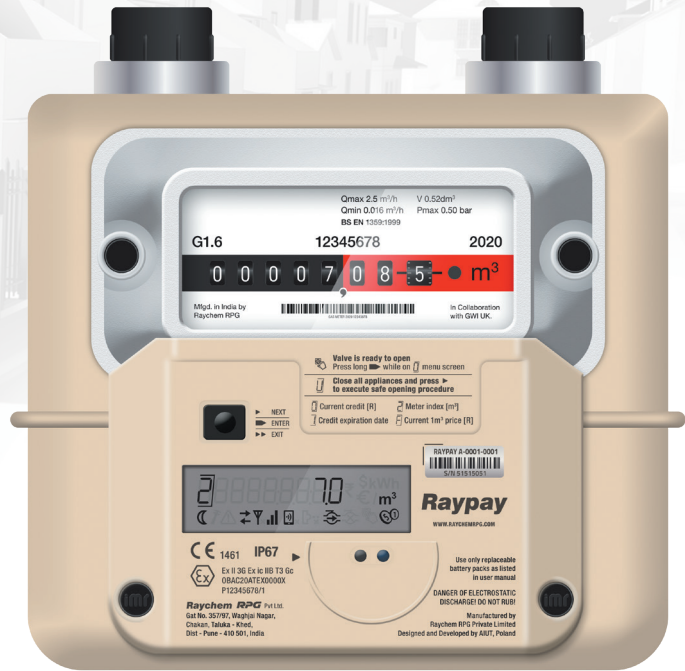





Raychem RPG RAYPAY Rxx6 IoT Prepaid Module




 RF walk-by, LoRa, NB-IoT, 2G (GSM/GPRS)

 Safe opening of the valve requiring consumer's confirmation and the procedure of leak detection

 Prepaid functionality

 Bluetooth Low Energy (optional)

 Cut off valve, remote control

 Magnetic or inductive (magnet proof) sensor

 Hourly consumption registered for 10 years

 Long life battery (up to 10 years)

 Robust, suitable for outdoor environment

 ATEX Zone 2

RAYPAY Rxx6 is a Raychem Prepaid Module dedicated for Raychem G1.6 diaphragm gas meters equipped with internal valve. The device registers readouts and transmits consumption data to back office server. **RAYPAY Rxx6** enables to control the valve remotely, without accessing the customer's premises. It also helps to reduce the costs of hard execution and promotes good payment behavior among consumers. The module is designed for walk-by* gas metering as well as fixed metering which makes it the most cost effective solution for commercial and residential applications.

*Optional, depending on configuration.

Raychem RPG

STE RPG

(A TE-Connectivity-RPG Enterprise JV)

Sales & Marketing:
Raychem RPG (P) Ltd.
Avanta Business Centre, Statesman House, 4th Floor,
Barakhamba Road, Connaught Place,
New Delhi - 110001
Contact: +91 9910161166

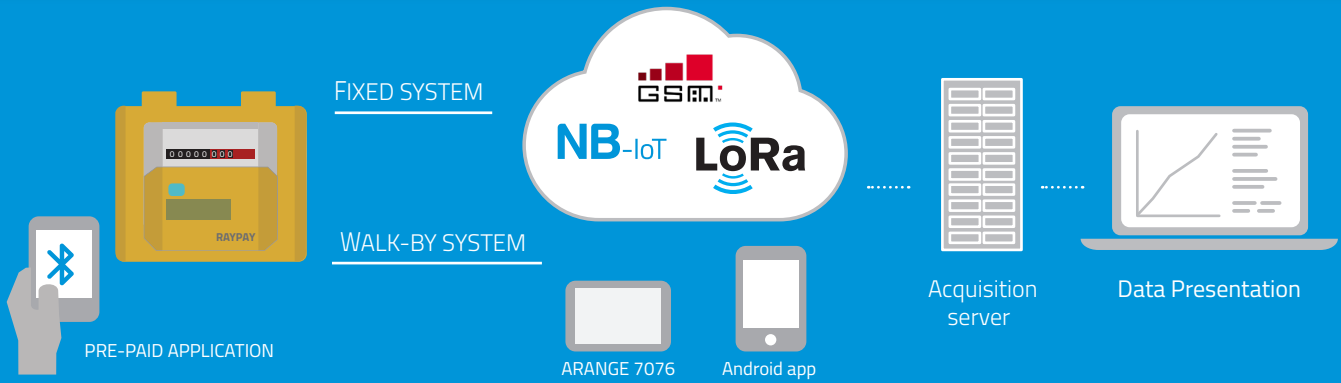
Corporate Identity Number - U74999MH1984PTC033786
© 2019

Disclaimer:

The information in this brochure is confidential, proprietary and legally privileged. It is intended solely for the addressee. This brochure is meant only for promotional purpose and has no legal value. The plan, specifications, images and other details herein are only indicative. It should not be used by anyone who is not the original intended recipient. Access to this information by anyone else is unauthorized and unlawful.

Manufacturing:
Ramdev Industrial Hub, Survey no 75 Hissa no 2,3,
Bapane Village, Malaji Pada Naigaon
East,Vasai,Palghar, Maharashtra 401208

Email your queries to:
ogd@raychemrpg.com



Functional and Technical Features

Data structures

- 10 years of hourly consumption data
- Daily readout: current device state, temperature, daily consumption
- Tamper detection: lid opening, external magnet, exceeding Qmax or operational temperature range
- Scheduled daily readouts
- Server initiated query - command (valve cut-off)

Power supply

- User replaceable long life battery (up to 10 years) depending on configuration and environment
- 2x 17450 size MnO2 cell, pack type: RBAT P174-2

RAYPAY versions

- RAYPAY R0F6 - RF Walk-by/ LoRaWAN,
- RAYPAY RA06 - NB-IoT modem
- RAYPAY RC06 - NB-IoT, 2G/SMS/GPRS modem

Communication

- RF walk-by, LoRa, NB-IoT, 2G (GSM/GPRS)
- Replaceable micro SIM card
- Encrypted data transmission (AES-128)
- Event triggered alarms
- Over-the-air configuration
- Bluetooth Low Energy

Environment

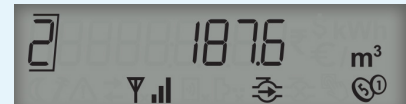
- Robust design, secured and sealed
- Suitable for outdoor environment, IP67
- Operational temperature -25°C to +55°C
- Ex zone (ATEX Zone 2 approved: II 3G Ex ic II B T3 Gc)

Compliance

- ATEX Directive 2014/34/EU (Zone 2, gas group B)
- Radio Equipment Directive (RED) 2014/53/EU – CE marked equipment
- IECEX Certified Equipment
- PESO and WPC India approvals

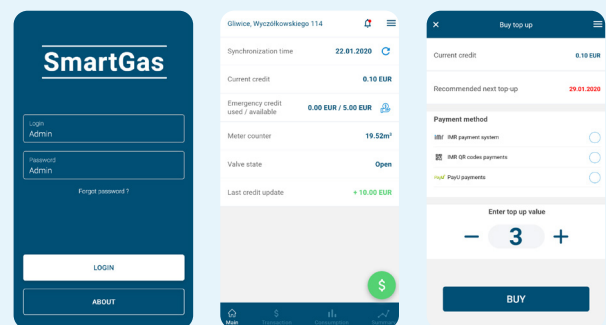
User friendly interface

LCD display with button for navigating menu: current meter value, customer ID, credit, payment mode, recommended amount and date of top-up



Prepaid functionality managed from Smart Gas application

- BLE on-site operations
- Quick access to your account and credit
- Historical credit, balance and consumption data
- List of transactions and their status
- Fast and easy top-up
- Recommended top-up value and date



SGM_RAYPAY_EN_INDIA_20200609

Disclaimer:

The information in this brochure is confidential, proprietary and legally privileged. It is intended solely for the addressee. This brochure is meant only for promotional purpose and has no legal value. The plan, specifications, images and other details herein are only indicative. It should not be used by anyone who is not the original intended recipient. Access to this information by anyone else is unauthorized and unlawful.