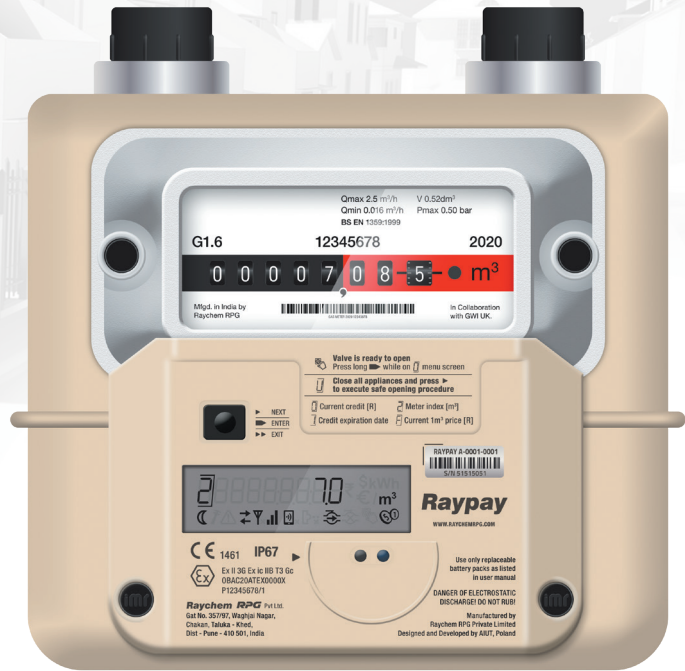





Raychem RPG RAYPAY Rxx6 IoT Prepaid Module




 RF walk-by, LoRa, NB-IoT, 2G (GSM/GPRS)

 Safe opening of the valve requiring consumer's confirmation and the procedure of leak detection

 Prepaid functionality

 Bluetooth Low Energy (optional)

 Cut off valve, remote control

 Magnetic or inductive (magnet proof) sensor

 Hourly consumption registered for 10 years

 Long life battery (up to 10 years)

 Robust, suitable for outdoor environment

 ATEX Zone 2

RAYPAY Rxx6 is a Raychem Prepaid Module dedicated for Raychem G1.6 diaphragm gas meters equipped with internal valve. The device registers readouts and transmits consumption data to back office server. **RAYPAY Rxx6** enables to control the valve remotely, without accessing the customer's premises. It also helps to reduce the costs of hard execution and promotes good payment behavior among consumers. The module is designed for walk-by* gas metering as well as fixed metering which makes it the most cost effective solution for commercial and residential applications.

*Optional, depending on configuration.

Raychem RPG

STE RPG

(A TE-Connectivity-RPG Enterprise JV)

Sales & Marketing:
Raychem RPG (P) Ltd.
Unit No. 503, 5th Floor
World Trade Tower (WTT)
C-1, Sector 16, Noida 201301 - UP
Contact: +91 8447700030

Manufacturing:
Gat No. 357/97, Waghjainagar Industrialist Association,
Waghjai Nagar, Off Chakan - Talegaon Road,
Chakan, Taluka - Khed,
Dist - Pune - 410 501 (India)

Email your queries to:
ogd@raychemrpg.com

Corporate Identity Number - U74999MH1984PTC033786

© 2019

Disclaimer:

The information in this brochure is confidential, proprietary and legally privileged. It is intended solely for the addressee. This brochure is meant only for promotional purpose and has no legal value. The plan, specifications, images and other details herein are only indicative. It should not be used by anyone who is not the original intended recipient. Access to this information by anyone else is unauthorized and unlawful.

